



**FINA Water Polo Rules 2013 – 2017**  
**Amendments, Additions, Interpretations and Explanations**  
**Effective as of 18 September 2013**

Please find below an overview of the changes and explanation in regards to the application and interpretation of the “New” Rules plus some applications and interpretations of the “old or existing” Rules.

For the most part, changes are highlighted in **blue**, with clarifications and notes **red**.

These rule changes have the intent of producing more movement, creativity and explosive speed in the game. Furthermore we hope that these rule changes will also assist in removing static situations and providing more clarity for the correct application of the rules.

There are only really a few new rules as such as number of timeouts, no extra time but direct to penalty shoot out, players (2 goalkeepers) and no resetting of possession clock on a double exclusion. All other changes are simply to reinforce the interpretation of the FINA Water Polo Rules 2009 – 2013.

By making current interpretations now part of the actual written rules, FINA and USAWP want to give referees no other option than to make the desired calls.

Also attached are the Appendices again with changes highlighted in **blue**:

- Appendix A Instructions for the Use of Two Referees
- Appendix B Signals to be Used by Officials

**WP 5.1** Each team shall consist of a maximum of thirteen players: eleven field players and two goalkeepers. A team shall start the game with not more than seven players, one of whom shall be the goalkeeper and who shall wear the goalkeeper's cap. Five reserves may be used as substitutes and one reserve goalkeeper who may be used only as a substitute goalkeeper. A team playing with less than seven players shall not be required to have a goalkeeper.

Please note that the particular application to the rules regarding goalkeepers and their substitutions may be amended for USAWP Sanctioned Events, details to follow.

**WP 5.6** At any time in the game, a player may be substituted by leaving the field of play at the re-entry area nearest to the player's own goal line. The substitute may enter the field of play from the re-entry area as soon as the player has visibly risen to the surface of the water within the re-entry area. If a goalkeeper is substituted under this Rule it must only be by the substitute goalkeeper. If the team has less than seven players the team shall not be required to have a goalkeeper. No substitution shall be made under this Rule between the time a referee awards a penalty throw and the taking of the throw, except at a timeout.

*[Note: In the event that the goalkeeper and substitute goalkeeper are not entitled or able to participate, a team playing with seven players shall be required to play with an alternative goalkeeper who shall wear the goalkeeper's cap.]*

If during the game a team has less than seven (7) players, for example when a team has no more substitutes remaining and also one of the remaining field players is out of the game so there only five (5) field players and one (1) goalkeeper remaining then the team is not obliged to have a goalkeeper and as a result is allowed to play with six (6) field players.

Also during a game should a team have no more substitutes apart from the substitute goalkeeper either the goalkeeper or substitute goalkeeper may play as a field player.

Please note that if during a game a player is excluded , the excluded player in the re-entry area is to be considered as part of the team, that is the team is still considered to have seven (7) and not six (6) players.

**WP 5.9** A goalkeeper who has been replaced by a substitute may not play in any position other than goalkeeper.

**WP 5.10** Should a goalkeeper retire from the game through any medical reason, the referees shall allow an immediate substitution by the substitute goalkeeper.

**WP 7.3** The referees shall have discretion to award (or not award) any ordinary, exclusion or penalty foul, depending on whether the decision would advantage the attacking team. They shall officiate in favour of the attacking team by awarding of a foul or refraining from awarding a foul if, in their opinion, awarding the foul would be an advantage to the offending player's team.

*[Note. The referees shall apply this principle to the fullest extent.]*

This rule is very clear instruction to referees to play advantage at all times. A referee must not call any ordinary or exclusion foul if it clearly disadvantages the attacking team.

In regards to the possibility for a referee to award a foul which would maintain the advantage to the attacking team an example (and maybe the only example) would be awarding an ordinary foul to the centre forward when the centre forward loses the ball in action. This would mean that the attacking team maintains possession.

Please note: Currently many referees call either exclusion or nothing at all at centre forward and centre back position which in most instances clearly advantages the defending team. Referees must take care to maintain possession for the attacking team if warranted.

**WP 11.3** Should the scores be level at full time in any game for which a definite result is required, there shall be a penalty shoot out to determine the result.

This rule removes the concept of extra time and will be applied where a definite result is required.

**WP 12.1** Each team may request one timeout in each period of play. The duration of the timeout shall be one minute. A timeout may be requested at any time, including after a goal, by the coach of the team in possession of the ball calling “timeout” and signalling to the secretary or referee with the hands forming a T-shape. If a timeout is requested, the secretary or referee shall immediately stop the game by whistle and the players shall immediately return to their respective halves of the field of play.

Timeouts are not cumulative therefore if a team does not use it’s timeout in a period of play the timeout is lost.

**WP 19.2** A player awarded a free throw shall put the ball into play immediately, including by passing or by shooting, as permitted by the Rules. It shall be an offence if a player who is clearly in a position most readily to take a free throw does not do so. A defending player having committed a foul shall move away from the player taking the free throw before raising an arm to block a pass or shot; a player who fails to do so shall be excluded for “interference” under WP 21.5.

The defending player who committed the foul must move away from the player taking the free throw to allow space for the player to take the free without interference. Whilst exact distance has not been specified the notional distance is 1 metre accordingly a defending player within 1 metre of

the player taking the free throw gives the referee the opportunity to exclude the defending player.

**WP 20.16** To waste time.

*[Note. It is always permissible for a referee to award an ordinary foul under this Rule before the 30 seconds' possession period has elapsed.*

*If the goalkeeper is the only player of the team in that team's half of the field of play, it shall be deemed wasting time for the goalkeeper to receive the ball from another member of that team who is in the other half of the field of play.*

*In the last minute of the game, the referees must be certain that there is intentional wasting time before applying this Rule.]*

The goalkeeper cannot receive the ball from any player when all attacking players are over half distance line.

Progressing the ball forward in the field of play is not deemed wasting time however sitting with ball (for example by the goalkeeper) is deemed wasting time and should be penalised accordingly. Players are allowed to incorporate their goalkeeper in the play however once the goalkeeper has received the ball the goalkeeper must progress it forward in the field of play by either swimming or throwing the ball.

Please note that in the last 30 seconds of the game should the team in possession of the ball make no endeavour to progress the ball forward in the field of play the referee should immediately award an ordinary foul against the team in accordance with WP 20.16.

**WP 20.17** To simulate being fouled.

*[Note. Simulation means an action taken by a player with the apparent intent of causing a referee to award a foul incorrectly against an opposing player. A referee may issue a yellow card against a team for repeated simulation and may apply WP 21.13 (persistent fouling) to sanction offending players.]*

It is an ordinary foul to simulate being fouled. For repeated simulation the referee may issue a yellow card which is a warning to a team for repeated simulation following which the referee may apply WP 21.13 (misconduct) for offending players.

**WP 21.1** It shall be an exclusion foul to commit any of the following offences (WP 21.4 to WP 21.18) which shall be punished (except as otherwise provided by the Rules) by the award of a free throw to the opposing team and the exclusion of the player who committed the foul.

Should the exclusion foul occur within the attacking teams 5 metre area the referee must in this instance apply the following procedure, namely:

- signal the exclusion
- signal the number of the excluded player both to the player and official table
- signal the restart of play by an upward movement of the hand

**WP 21.8** To impede or otherwise prevent the free movement of an opponent who is not holding the ball, including swimming on the opponent's shoulders, back or legs. "Holding" is lifting, carrying or touching the ball but does not include dribbling the ball.

*[Note. This Rule can also be applied to advantage the attacking team. If a counter attack is in progress and a foul is committed which limits the attack, the offending player shall be excluded.]*

*The first thing for the referee to consider is whether the opponent is holding the ball, because if the player is doing so, the player making the challenge cannot be penalised for “impeding”. It is clear that a player is holding the ball if it is held raised above the water (figure 9). The player is also holding the ball if the player swims with it held in the hand or makes contact with the ball while it is lying on the surface of the water (figure 10). Swimming with the ball (dribbling), as shown in figure 11, is not considered to be holding.*

*A common form of impeding is where the player swims across the opponent’s legs (figure 12), thus reducing the pace at which the opponent can move and interfering with the normal leg action. Another form is swimming on the opponent’s shoulders. It must also be remembered that the foul of impeding can be committed by the player who is in possession of the ball. For example, figure 13 shows a player keeping one hand on the ball and trying to force the opponent away to gain more space. Figure 14 shows a player in possession of the ball impeding the opponent by pushing the opponent back with the head. Care must be taken with figures 13 & 14, because any violent movement by the player in possession of the ball might constitute striking or even brutality; the figures are intended to illustrate impeding without any violent movement. A player may also commit the offence of impeding even if the player is not holding or touching the ball. Figure 15 shows a player intentionally blocking the opponent with the player’s body and with the arms flung open, thus making access to the ball impossible. This offence is most often committed near the boundaries of the field of play.]*

**This rule was previously applied as an ordinary foul accordingly this is a significant change but it refers only to an opponent not holding the ball.**

Should a player lose possession of the ball and the defending player cannot avoid impeding the attacking player in this action an ordinary foul should be awarded under this Rule.

This is to apply anywhere in the field of play and is not restricted to the centre forward – centre back position.

If however the attacking player was never holding the ball an exclusion foul should be awarded under this Rule.

Also similarly if the foul is by the attacking player (centre forward) against the defending player (centre back) the referee should simply award an ordinary foul against the attacking player, that is an offensive or contra foul awarded against the attacking player.



**Figure 9**



**Figure 10**



**Figure 11**



**Figure 12**



**Figure 13**



**Figure 14**



**Figure 15**

**WP 21.10** To use two hands to hold an opponent anywhere in the field of play.



This is a clear reinforcement of the interpretation of WP 21.9. A defending player using two hands to hold an attacking player who is not holding the ball must be excluded.

**WP 21.11** Upon a change of possession, for a defending player to commit a foul on any player of the team in possession of the ball, anywhere in the attacking team's half of the field of play.

*[Note. This Rule is to be applied if the team losing possession of the ball attempts to restrict the attack of the other team by committing a foul on any attacking player before that player has crossed the half-distance line.]*

This is a clear reinforcement of WP 21.9 and further emphasized with the inclusion of new WP 21.8 as an exclusion foul. Any foul with the simple objective to stop the flow of the game especially the counter attack must result in an exclusion of the player committing the foul. This kind of foul is also known as a 'professional foul' or a 'tactical foul'.

Again as with the instructions for WP 21.8 this is to apply only to a player not holding the ball and should the attacking player lose possession of the ball and the defending player cannot avoid impeding the attacking player in this action an ordinary foul should be awarded under this Rule.

If however the attacking player was never holding the ball or the foul has clearly the objective of stopping the counter attack an exclusion foul should be awarded under this Rule.

The reason why FINA have added 'anywhere in the attacking team's half of the field of play' is simply because many referees have only called an ordinary foul for this kind of fouling when it has occurred in the attacking team's half of the field of play (in other words far from the defending team's goal).

**WP 21.15** In the case of simultaneous exclusion of players of opposing teams during play, both players are excluded for 20 seconds. The 30 second possession clock is **not** reset. **Play** is restarted with a free throw to the team which had possession of the ball. If neither team had possession when the simultaneous exclusions were called, **the 30 second possession clock is reset and** play shall be restarted with a neutral throw.

Previously the possession clock was reset when a simultaneous exclusion of players of opposing teams during play occurred this is now no longer the case.

When neither team has possession at the time of the simultaneous exclusion, for example when after a shot the ball rebounded off the goalkeeper and was floating 'in no-man's-land' the possession clock is reset and play is restarted with a neutral throw.

It is important for referees to establish if there was ball possession or not at the time of the simultaneous exclusion.

**WP 22.7** For the coach, or any team official of the team not in possession of the ball to request a timeout. No personal foul shall be recorded for this offence.

The team requesting a timeout while not in possession of the ball will lose its timeout and a penalty throw shall be awarded to the opposing team.

**WP 22.8** For the coach, or any team official to take any action with intent to prevent a probable goal or to delay the game. No personal foul shall be recorded for this offence.

'to delay the game' means while the game is in progress and should a coach or team official take any action with intent to prevent a probable goal or to delay the game a penalty throw shall be awarded to the opposing team.

'to delay the game' does not relate to interval time such as between periods or after a timeout. A coach delaying the game after the end of interval time or following a timeout (by not having his team lining up on time for example) should receive a yellow card but no penalty throw is awarded.

WP 22.8 should also be applied to the situation where a defending player deliberately delays the game such as when the attacking team has a 6 on 5 advantage with limited time remaining in the game and a defending player deliberately throws the ball before the recommencement of the game to a position in the field of play that makes it impossible for the attacking team in the remaining time to establish or create a scoring opportunity. In this situation a penalty throw shall be awarded to the opposing team.

**WP 23.1** A penalty throw shall be taken by any player of the team to which it is awarded, except the goalkeeper, from any point on the opponents' 5 metre line.

It is important that referees ensure that the penalty throw is taken on the opponents' 5 metre line as there is a tendency for the player taking the penalty shot to move forward in the action of the penalty throw such that the shot actually occurs from within the opponents' 5 metre.

## **APPENDIX A**

### **INSTRUCTIONS FOR THE USE OF TWO REFEREES**

- 1.** The referees are in absolute control of the game and shall have equal powers to declare fouls and penalties. Differences of opinion of the referees shall not serve as a basis for protest or appeal.
- 2.** The committee or organisation appointing the referees shall have power to designate the side of the pool from which each referee shall officiate. Referees shall change sides of the pool before the start of any period when the teams do not change ends.

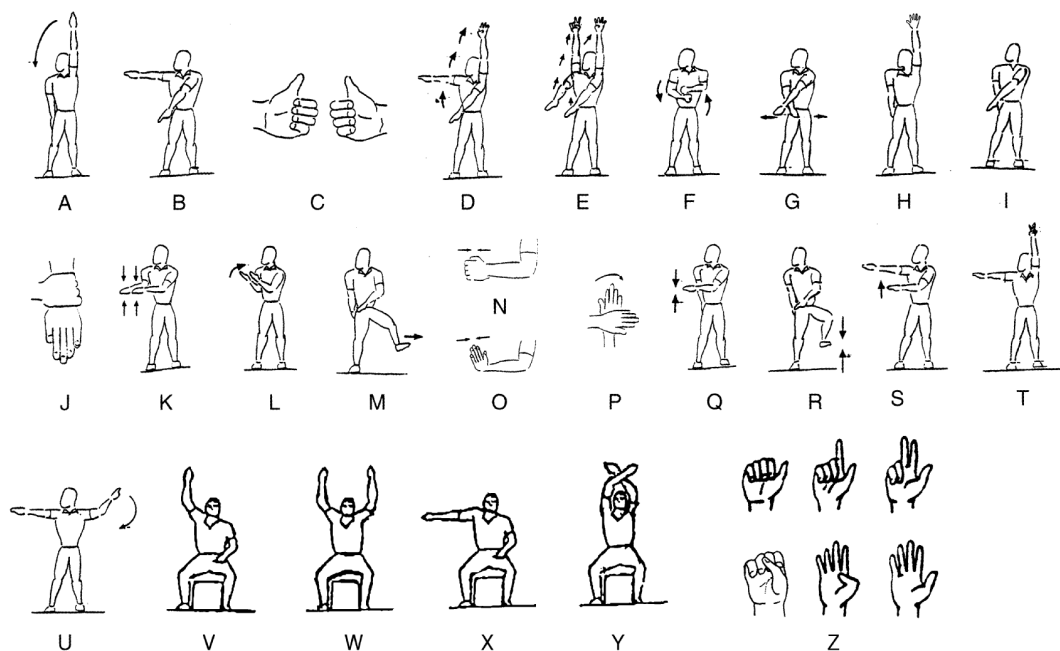
3. At the start of the game and of each period, the referees will position themselves on the respective five (5) metre line. The starting signal shall be given by the referee on the same side as the official table.
4. After a goal, the signal to restart shall be given by the referee who was controlling the attacking situation when the goal was scored. Before restarting, the referees shall ensure that any substitutions have been completed.
5. Each referee shall have the power to declare fouls in any part of the field of play but each referee shall give their primary attention to the offensive situation attacking the goal to their right. The referee not controlling the attacking situation (the defensive referee) shall maintain a position no closer to the goal being attacked than that player of the attacking team furthest back from the goal.
6. When awarding a free throw, goal throw or corner throw, the referee making the decision shall blow the whistle and both referees shall indicate the direction of the attack, to enable players in different parts of the pool to see quickly which team has been awarded the throw. The referee making the decision shall point to where the throw is to be taken if the ball is not at that position. Referees shall use the signals set out in Appendix B to indicate the nature of the fouls which they are penalising.
7. If, in the referee's opinion, a player persists in playing in an unsporting manner or engages in simulation, the referee shall issue a yellow card to the offending player. Should the action continue, the referee will issue the player with a red card visible to both the field of play and the table as this is deemed to be misconduct. The referee then signals the excluded player's cap number to the table.
8. The signal for a penalty throw to be taken shall be made by the attacking referee, except that a player who wishes to take the throw

with the left hand may request the defensive referee to make the signal.

9. When simultaneous free throws are awarded by both referees to the same team, the award shall go to the player awarded the throw by the attacking referee.
10. When simultaneous awards are made for ordinary fouls but for opposing teams, the award shall be a neutral throw, to be taken by the attacking referee.
11. When simultaneous awards are made by both referees and one is for an ordinary foul and the other is for an exclusion foul or penalty foul, the exclusion foul or penalty foul award shall be applied.
12. When players of both teams commit an exclusion foul simultaneously during play, the referees shall call the ball from the water and make sure both teams and the secretaries know who is excluded. The 30 second possession clock is **not** reset and play is restarted with a free throw to the team which had possession of the ball. If neither team had possession when the simultaneous exclusions were called, **the 30 second possession clock is reset and** play shall be restarted with a neutral throw.
13. In the event of simultaneous awards of penalty throws to both teams, the first throw shall be taken by the team last in possession of the ball. After the second penalty throw has been taken, the game will restart with the team which had possession of the ball receiving a free throw at or behind the half distance line.

## **APPENDIX B**

### **SIGNALS TO BE USED BY OFFICIALS**



**Fig. A** The referee lowers the arm from a vertical position to signal (i) the start of the period (ii) to restart after a goal (iii) the taking of a penalty throw.

**Fig. B** To point with one arm in the direction of the attack and to use the other arm to indicate the place where the ball is to be put into play at a free throw, goal throw or corner throw.

**Fig. C** To signal a neutral throw. The referee points to the place where the neutral throw has been awarded, points both thumbs up and calls for the ball.

**Fig. D** To signal the exclusion of a player. The referee points to the player and then moves the arm quickly towards the boundary of the field of play. The referee then signals the excluded player's cap number so that it is visible to the field of play and the table.

**Fig. E** To signal the simultaneous exclusion of two players. The referee points with both hands to the two players, signals their exclusion in

accordance with Fig. D, and then immediately signals the players' cap numbers.

- Fig. F** To signal the exclusion of a player for misconduct. The referee signals exclusion in accordance with Fig. D (or Fig. E if appropriate) and then rotates the hands round one another in such a way that is visible to both the field of play and the table in addition to issuing the player with a red card. The referee then signals the excluded player's cap number to the table.
- Fig. G** To signal the exclusion of a player with substitution after four (4) minutes. The referee signals exclusion in accordance with Fig. D (or Fig. E if appropriate) and then crosses the arms in such a way that is visible to both the field of play and the table in addition to issuing the player with a red card. The referee then signals the excluded player's cap number to the table.
- Fig. H** To signal the award of a penalty throw. The referee raises an arm with five fingers in the air. The referee then signals the offending player's cap number to the table.
- Fig. I** To signal that a goal has been scored. The referee signals by whistle and by immediately pointing to the centre of the field of play.
- Fig. J** To indicate the exclusion foul of holding an opponent. The referee makes a motion holding the wrist of one hand with the other hand.
- Fig. K** To indicate the exclusion foul of sinking an opponent. The referee makes a downward motion with both hands starting from a horizontal position.
- Fig. L** To indicate the exclusion foul of pulling back an opponent. The referee makes a pulling motion with both hands vertically extended and pulling towards his body.

**Fig. M** To indicate the exclusion foul of kicking an opponent. The referee makes a kicking movement.

**Fig. N** To indicate the exclusion foul of striking an opponent. The referee makes a striking motion with a closed fist starting from a horizontal position.

**Fig. O** To indicate the ordinary foul of pushing or pushing off from an opponent. The referee makes a pushing motion away from the body starting from a horizontal position.

**Fig. P** To indicate the **exclusion** foul of impeding an opponent. The referee makes a crossing motion with one hand horizontally crossing the other.

**Fig. Q** To indicate the ordinary foul of taking the ball under the water. The referee makes a downward motion with a hand starting from a horizontal position.

**Fig. R** To indicate the ordinary foul of standing on the bottom of the pool. The referee raises and lowers one foot.

**Fig. S** To indicate the ordinary foul of undue delay in the taking of a free throw, goal throw or corner throw. The referee raises a hand once or twice with the palm turned upwards.

**Fig. T** To indicate a violation of the two-metre Rule. The referee indicates the number 2 by raising the fore and middle fingers in the air with the arm vertically extended.

**Fig. U** To indicate the ordinary fouls **of wasting time and the** expiry of 30 seconds' possession. The referee moves a hand in a circular motion two or three times.

**Fig. V** By a goal judge to signal for the start of a period.



**Fig. W** By a goal judge to signal an improper start, restart or improper re-entry of an excluded player or substitute.

**Fig. X** By a goal judge to signal a goal throw or corner throw.

**Fig. Y** By a goal judge to signal a goal.

**Fig. Z** To indicate a player's cap number. To enable the referee to communicate better with the players and the secretary, signals are made using both hands if appropriate where the number exceeds five. One hand shows five fingers with the other hand showing additional fingers to make up the sum of the player's number. For the number ten, a clenched fist is shown. If the number exceeds ten, one hand is shown as a clenched fist with the other hand showing additional fingers to make up the sum of the player's number.